

# micro-Mounter

**ACCURATE.  
ERGONOMIC.  
QUICK.**

The Microflex microMounter is used for accurate mounting of flexographic photopolymer plates onto sleeves up to a maximum size of 500 mm (19,68") in width and 610 mm (24") in repeat. This very handy and ergonomic model is particularly suited for mounting 1 plate per sleeve and due to its convenient size, it will easily fit in at any label printer.

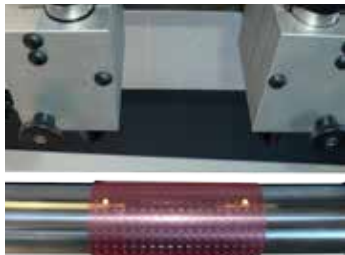
It is designed for narrow web and label printing presses using permanent shafts to hold sleeves. The micro-Mounter is equipped with a shaft identical to those used on press to hold the sleeves during mounting.

The microMounter allows highly productive and extremely precise mounting of any flexographic printing plates. The enlargement of microdots by a factor of 40 and direct display of the image on the LCD monitor featuring registration marks ensures a high degree of precision during mounting.

The combination of precise components and very robust construction has established a very high standard in the flexo industry market. This system will improve printing quality and register significantly.



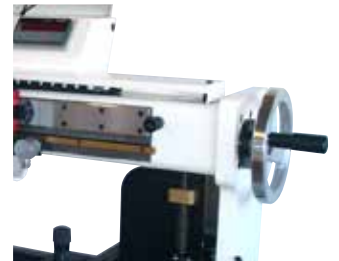
▲ LCD monitor, split screen with 40 times magnification. A digital readout displays the exact position to the operator.



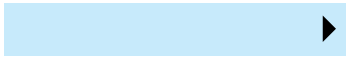
▲ Optical fiber, halogen light spots projected on plate surface for quick pre-positioning.



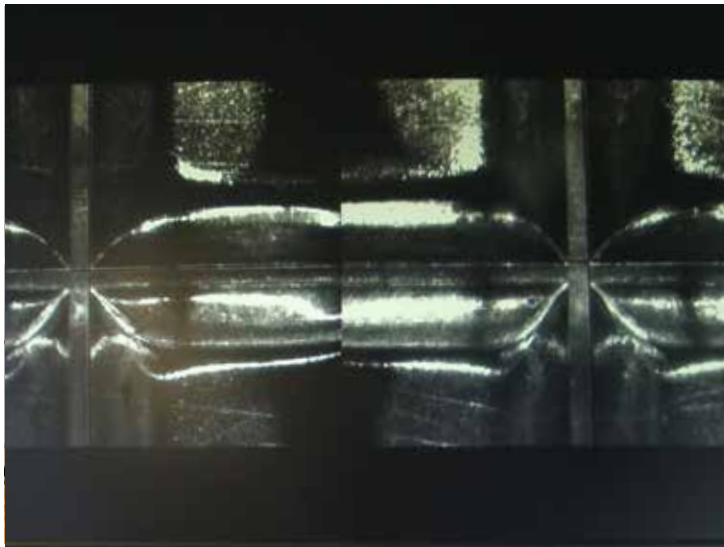
▲ Circumferential positions are given by a 12 step manual dividing head.



▲ Shaft height is manually adjustable.

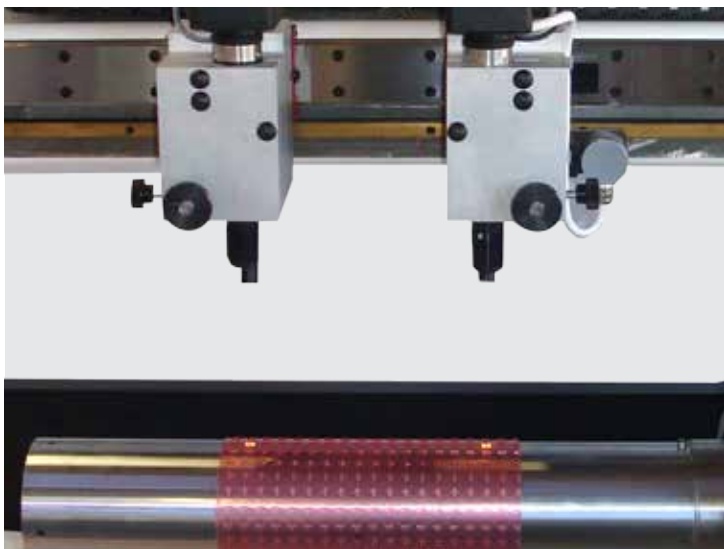


Working height remains the same during mounting so the operator has good, ergonomic working conditions.



Positioning and mounting are done quickly by means of the two cameras which the operator moves manually into position.

The enlargement of microdots by a factor of 40 and direct display of the image on the LCD monitor featuring registration marks ensures a high degree of precision during mounting.



	<b>microMouter</b>
<b>MODEL</b>	500
<b>PERFORMANCE</b>	
Plate types	All flexographic photopolymer plates
Printing width (max)	500 mm (19.68")
Repeat length	610 mm (24")
Precision	±0.01 mm (0.0004")
<b>CONSUMPTION</b>	
Electrical	230V / 2 x 110V, 50/60 Hz Single phase, neutral and ground connection wires 3 x 4 mm <sup>2</sup>
Power (nominal)	0.07 kW
Current (nominal)	0.3 Amp
Grounding	≤ 0.1 Ω
Temperature range	+15°C/59°F to +30°C/86°F
Relative humidity	40% to 60% non-condensing
<b>GENERAL</b>	
Dimensions (LxWxH)	(130 + 920) x 480 x 940 mm ((5.1+36.2) x 18.9 x 37.0")
Weight	150 Kg / 374 lb
Approvals	CE/UL certification
Standard	Technical documentation. Cameras, two manually driven with digital readout. LCD monitor, split screen with 40 times enlargement. Dividing head, manual 12 steps. Optical fiber, halogen light spots projected on sleeve surface for quick pre-positioning. Shaft height, manually adjustable.
Accessories	Table plate system, 2 table plates

**Glunz & Jensen Microflex**  
 Nordmarken 2  
 5750 Ringe, Denmark  
 +45 6262 4165  
 info.microflex@glunz-jensen.com

[microflex.glunz-jensen.com](http://microflex.glunz-jensen.com)