

Concept 305 DW



**ROBUST.
FLEXIBLE.
TRUSTED.**

The world's first flexographic processor with double washout area

Concept 305 DW (Digital Washer) represents the state-of-the-art of washing units for medium size plates up to 920 x 1200 mm (36 x 48"). The unit works with any kind of plate and is equipped with a particular system to process digital plates. Concept 305 DW has two separate tanks for the solvent. One, which is dedicated to the pre-washer section, collects the solvent used to remove the layer of the digital plate. The other tank is for the washing section and is used only with non-contaminated solvent. The efficient movement of the brushes ensures high speed in processing time and perfect results for each plate.

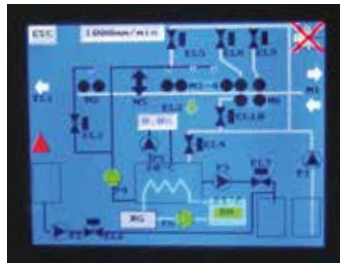
This product has been fully designed to reflect the market demand focusing in very high quality production of digital flexo plates.



Rotating brushes with oscillating movement in opposing directions (an original Degraf concept).



Integrated heater-chiller for solvent temperature control, solid content measurement and solvent replenishment.



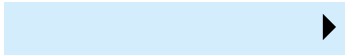
Operator friendly colour touch screen with graphic display of all functions, 20 memory channels and PCL control.



Integrated solvent fume extraction system.



A solvent density meter measures washing solvent, topping it up with fresh solvent when the values exceed the setup values, thereby maintaining an excellent result.



The solvent used during the pre-washer section is collected into a dedicated tank. The solvent for the washout section is non-contaminated by residue of layer and/or carbon.



The unique brush movement reduces the processing time and eliminates any kind of movement of the plate when in contact with the brushes.



Double and independent hydraulic system for the pre-washing section (to remove the layer) and for the wash-out of the plate.



The rotating brushes are gear driven and a simple locking system allows the removal of the brushes without requiring any kind of tool, simplifying maintenance and cleaning.

Technical Specifications

MODEL	Concept 305 DW
PERFORMANCE	
Plate types	Flexographic plates
Plate size (max)	920 x 1200 mm (36 x 48")
CONSUMPTION	
Power (operate)	8.5 kW -- 13/24A
Power (source)	400V 3PH + N / 230V 3 PH -- 50/60Hz
Compressed air	6 bar
Air extraction	300 m ³ /h
GENERAL	
Dimensions (uncrated)	1700 x 3820 x 970 mm (67.0 x 150.4 x 38.2")
Weight (uncrated)	1070 kg (2359 lbs)
Dimensions (crated)	1900 x 4100 x 1300 mm (74.8 x 161.4 x 51.2")
Weight (crated)	1400 kg (3086 lbs)



Glunz & Jensen Degraf S.p.A.
 "Il Girasole" Palazzo Donatello 8/03B
 20084-Lacchiarella (MI), ITALY
 +39 02 900 90 180
 info@degraf.com

degraf.glunz-jensen.com