

Asahi AWP™ 4835 P Plate Processor



The new AWP™ 4835 P plate processor is designed for the challenging demand of the middle size customer using a plate format of 90 x 120 cm / 36 x 48 inch. The processor is engineered to deliver a sustainable quality output with a fast plate access time. At the same time the AWP™ 4835 P water processor is reducing the natural water resources to a minimum, making it an environmentally sound solution aiming to drive print forward in balance with the environment.

Main Features

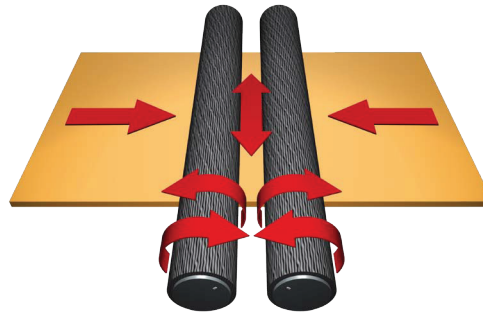
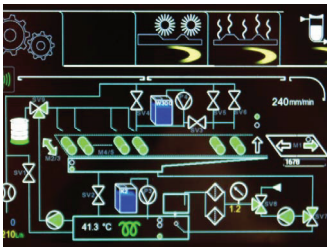
- User-friendly machine dimensions saves space 3195 mm x 2056 mm x 1310 mm (LxWxH)
- Maximum plate size 90 x 120 cm / 35 x 48 inch of 1.14mm and 1.70mm plate thickness
- Washed photopolymer residues are caught in an integrated two-way filtration system and a solid polymer cake remains
- Stainless steel body for easy cleaning
- Maintenance alarms with user's parameter capabilities. All important functions are centrally accessible via Touchscreen
- Remote connection via Internet as standard for machine service
- Automatic clamping bar for easy plate processing
- Reverse rotating oscillating brushes and reciprocating plate setter ensure optimum washout performance
- The processor is compatible with the challenging new screening technologies in the industry
- Processing temperatures at around 40° C ensure perfect plate production with excellent dimensional plate stability
- The AWP™ 4835 satisfies to the highest quality demand using environmentally sound plate processing technologies

DISTRIBUTED BY

Asahi AWP™ 4835 P Plate Processor

| Technical Specifications | |
|--------------------------|----------------------|
| Weight: | 2000kg |
| Electrical specs: | 3*400V / 20A – 15 kW |
| or: | 3*230V / 35A – 15 kW |
| Water inlet: | 1/2" |
| Water outlet: | 3/4" |
| Exhaust: | 2"dia. 100mm |
| Compressed air: | diam. 6mm / 6bars |

Connections: 1 Compressed Air 2 Air Exhaust 3 Fresh Water in 4 Dirty Water out



» Reverse rotating and oscillating brushes ensure optimum washout performance



» All important functions are centrally accessible via TouchScreen
 » Internet connection for remote maintenance service

» Washed photopolymer residues are caught in the filter and a solid polymer cake remains
 » Two-way-filtration system for maximum efficiency

Optional Unit

If not already available in your plate making infrastructure, you need an exposure frame, dryer and light finisher for AWP™ plate processing. We therefore recommend the EVO3 EDLF.

The EVO3 EDLF is a combined unit with exposure unit, integrated four dryer drawers and light finisher section. The unit is available in manual or with automatic lid opening. The exposure section includes a water circulation cooled bed system for uniform and constant temperature and a vacuum system for analog plates. The UVA exposure lamps reach an output of up to 30 mW/cm² leading to a 1/3 faster exposure time which is controlled by a light integrator and can operate in mJ or sec. The dryer features an automatic pre-heat option with automatic switch off after the last plate. The light finisher includes an air flow cooling system with sequential or combined UVA-UVC post exposure. The working of all UV lamps on the unit are detected by an optical fiber.



DISTRIBUTED BY



4349 OLD SANTA FE ROAD
 SAN LUIS OBISPO, CA
 93401

CONTACT US TODAY AT:
 877.820.6301
 CTGRAPHICARTS.COM