



# AWP™\_CleanFlat

Water-washable FlatTop plate





# Flat. Not Boring.

## Water-washable FlatTop Plate

AWP™-CleanFlat is a water-washable FlatTop plate solution with high-quality printing press consistency. It improves the ink laydown on wide web flexible packaging and beverage carton printing. At the same time it delivers a sustainable reduction of the printer's carbon footprint. It's flat, but certainly not boring!

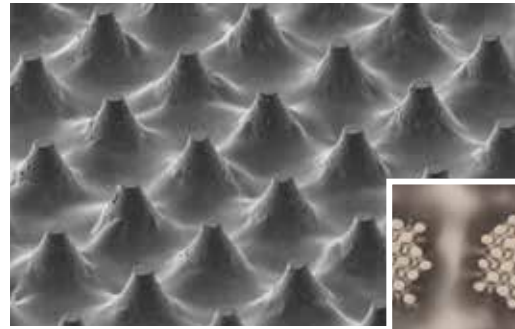
## Preserving Precious Resources

AWP™-CleanFlat water-washable plates provide many benefits that combine to bring flexographic printing more in harmony with the environment, preserving precious energy and natural resources while delivering excellent press performance and vibrant images.

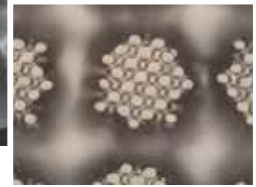


## Excellent Image Clarity with **Microcell**

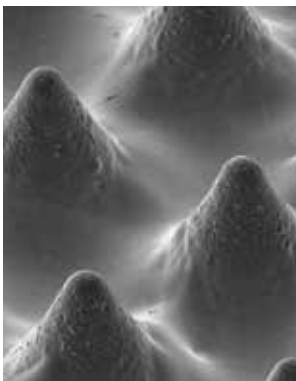
AWP™-CleanFlat is a FlatTop out-of-the-box plate, with no special workflow or equipment required. It is compatible with standard workflows such as: UV bank light tubes, UV LED or FULL HD exposure systems. AWP™-CleanFlat features Asahi's CleanPrint technology and excellent printing performance in combination with microcell screening in harmony with the environment.



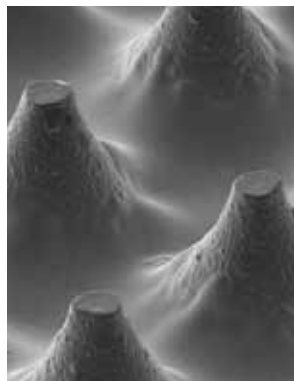
AWP™-CleanFlat



Crystal screen of AWP™-CleanFlat



Typical image of RoundTop screen dots



The FlatTop dot surface of AWP™-CleanFlat

## Stable Printing Quality with **Rough Surface Substrates**

The AWP™ CleanFlat plate creates stability in printing quality from start to finish. Due to the flat surface contact area, almost any substrate from smooth film to rough surface paper can be printed with light printing pressure. The AWP™ CleanFlat can achieve stable printing with excellent ink laydown even when printing on rough surfaces. This makes CleanFlat the printer's plate of choice for repeated jobs and for long runs.

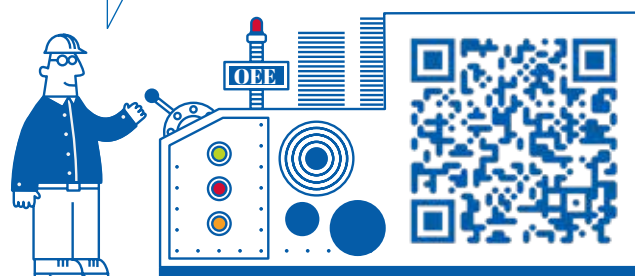
## CleanPrint for **More Sustainable Flexographic Printing**

AWP™-CleanFlat flexographic plates feature Asahi's CleanPrint technology. CleanPrint flexographic plates from Asahi Photoproducts have been specifically developed by our chemical engineers to transfer all remaining ink to the printed substrate, reducing press stops for plate cleaning while delivering exceptional consistent quality throughout the entire run. This results in higher quality, less waste, and improvement in OEE!

## Superior **OEE**, Superior Quality

Overall Equipment Effectiveness (OEE) is a critical metric for profitable flexographic printing operations. CleanPrint plates deliver significant improvement in OEE over other plates, driving up availability, performance and quality like no other.

Want to know how efficiently your press is operating? Scan the QR code to find out!



Contact  
Asahi  
Photoproducts  
today to  
learn more.

## AWP™-CleanFlat Summary

- Premium, water-washable photopolymer plate allowing high screening resolution and stable small dots.
- FlatTop plates, with no special workflow or equipment required.
- Excellent ink transfer with CleanPrint for fewer printing press stops for plate cleaning, improving profitability.
- Smooth tonal transitions with stable highlight dots, allowing job transfer from other printing technologies.
- Compatible with most available inks (solvent-, water- and UV-based inks).
- Superb plate flexibility eliminating plate lift-off with small printing cylinders.
- Total platemaking time for complete process is well under 1 hour.
- Enables flexographic printing more in harmony with the environment.

	AWP™-CleanFlat	
Plate thickness	1.14 mm	1.70 mm
Shore A Hardness (Teclock)	77	70
Applications	Film, Label, Paper, Beverage carton	
Ink recommendation	Water-based, Solvent-based and UV-based Inks	
Plate colour	Yellow	

DISTRIBUTED BY



4349 OLD SANTA FE ROAD  
SAN LUIS OBISPO, CA  
93401

CONTACT US TODAY AT:  
877.820.6301  
[CTGRAPHICARTS.COM](http://CTGRAPHICARTS.COM)